



DAVIDHARBER

INTERIORS

CONTENTS

Inner Vision	2
Turbine	4
Water Walls	6
Alveare	8
Vortex	9
Volante	10
Chalice	12
Lattice Wall Sculpture	14
Labyrinth Wall Sculpture	15
Mini Atlas	16
Noonday Cannon	17
Mantle	18
Torus	20
Fire Table	21
The Quince Tree	22
Titan	24
Copper Water Wall	26
Ways of Working	28
Installations	30
Meet the Team	31
Next Steps	32

DAVIDHARBER

INTERIORS

INNER VISION

'I don't really do "outdoors" and "indoors",' says David Harber. 'I just think in terms of environments.' Harber is best known for his garden sculptures, but has long extended his repertoire into interiors as well as public spaces, and in terms of his artistic practice, sees no major difference in working across these boundaries. A three-dimensional object in a three-dimensional setting has essentially the same variables of light, colour and scale. Sight-lines, and an idea of the space's purpose – whether it be living, socialising or solitude – remain central.

Some of his pieces work best as a focal point. A recent commission for a private house in Pakistan led to the creation of a bowl called Fire Vortex which sits in the middle of a room, with water swirling in a gentle vortex and a flame dancing over the point where the water disappears.

'On the one hand you have the epic and the public and on the other the meditative and the private,' says David. 'It always depends on the space and the role that the client wants the artwork to fulfill.' And that might be inside, or outside. For Harber, the task remains the same – to create a sense of mystery and enchantment.





FLASHING BLADES
TURBINE

The new Turbine wall sculpture is inspired by the fins of a jet engine. Formed from juxtaposed metal blades, the light, shadows and reflections all shift and interplay, depending on the vantage point, bringing this exciting new sculpture energetically to life. Notches on the Turbine blades can be configured to create any shape and these seemingly appear and disappear depending on the angle of viewing.



A photograph of a swimming pool with a decorative water wall and arched niches. The water wall is made of stainless steel petals, and the niches are illuminated from within. The ceiling has a grid pattern with recessed lighting. The pool water is a deep blue color.

LIQUID FUSION

WATER WALLS

David Harber's water walls are justly renowned. Using combinations of traditional and contemporary materials, mood lighting, etched detailing we are known for creating a 'wow' factor even in the most limited spaces.

PETAL WATER WALL

This piece comprises a series of mirror-polished stainless steel petals, each overlapping to create a shimmering effect that is enhanced by LED lighting.



VIBRATIONS

ALVEARE

Inspired by the natural form of a beehive, this small indoor sculpture is perfect for use on a console table or indeed any table in the home. Composed of mirror-polished stainless steel tubes crafted to an elliptical form, the inner surfaces of each tube can be coated with any colour. This piece is truly beguiling when backlit.



MESMERISING

VORTEX

Inspired by the notion of The Black Hole, the Vortex is a water feature that combines mirror-polished stainless steel, flowing water and LED lighting to create a mesmerising whirlpool of movement.

UPLIFTING

VOLANTE

With two verdigris bronze wings flanking a mirror-polished stainless steel rill, down which moving water lightly cascades, Volante is a figure-like statement: tall, elegant, self-contained and benefitting from having a small physical footprint.





Kitchen by Charles Yorke

REFLECTIONS CHALICE

The award-winning Chalice was originally designed for the exterior but can also create a mesmerising focal point in an interior setting. Made of two mirror-polished stainless steel hemispheres, the water overflows from its outer rim and by the magic of surface tension adheres to the outer surface. LEDs create a subtle dancing light effect at night.





LUMINOSITY

LATTICE WALL SCULPTURE

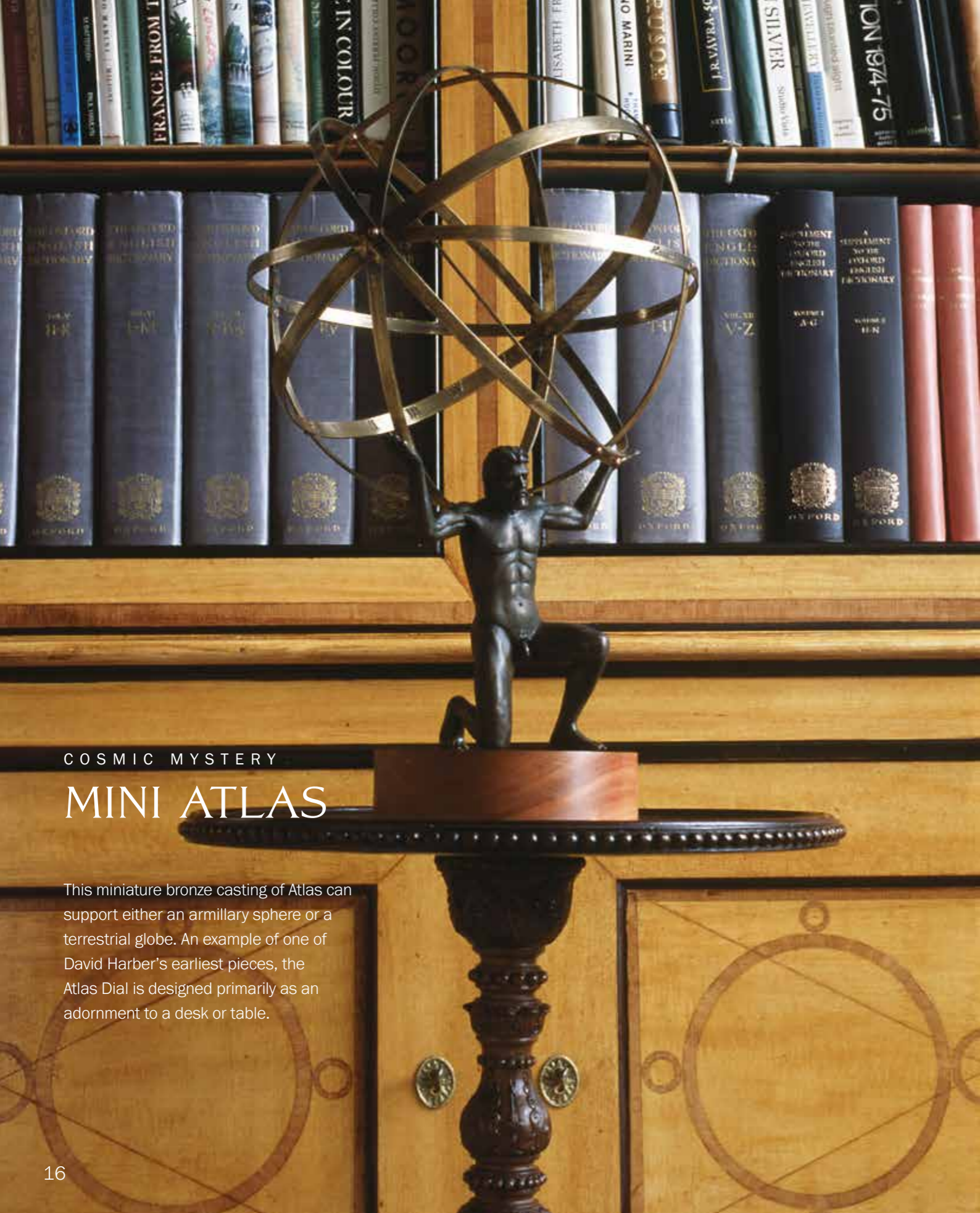
An intricate wall sculpture made of a delicate latticework of verdigris bronze, the inside of which is gilded so that the warmth and lustre of the gold is reflected back into the mirror-polished stainless steel mount. A reflective frame by day, the LED lighting creates an illuminated wall sculpture by night.



GEOMETRY

LABYRINTH WALL SCULPTURE

Here, randomly placed plates of verdigris bronze appear in a labyrinth-like pattern, each backed with 23³/₄-carat gold leaf and reflected in their mount. Held in an elegant frame and backed with diffused LED light, the piece creates a sense of drama.



COSMIC MYSTERY

MINI ATLAS

This miniature bronze casting of Atlas can support either an armillary sphere or a terrestrial globe. An example of one of David Harber's earliest pieces, the Atlas Dial is designed primarily as an adornment to a desk or table.

SOLAR SPECTACLE NOONDAY CANNON



Based on a noonday cannon commissioned by the Sun King, Louis XIV, for the gardens of Versailles, this miniature bronze cannon is set off at noon by the sun's rays, which are magnified through a lens. Beautiful and intriguing as a scientific instrument yet dramatically theatrical when put to use outside.



INSPIRED BY NATURE

MANTLE

This spherical piece is one of David Harber's best-known and loved designs, not least for the way in which it commands attention. The Mantle is made of hundreds of verdigris bronze petal shapes, the underside of each one gilded with 23³/₄-carat gold leaf. As an interior piece it is scaled accordingly and internally lit, creating a rich, magical light source. This is a limited-edition piece.

INTO THE VOID

TORUS

Brilliant mirror-polished stainless steel, convex curves and knife-edge seams combine with a central 'portal' hole to contrast and connect with its environment. This scaled-down version of the original, which can be mounted on a surface or a wall, serves both to soften and expand an interior space.



ETERNAL FLAME FIRE TABLE

This table is a Dark Planet hemisphere inset with a mirror-polished stainless steel vortex within which a flame mechanism has been set. It creates an extraordinary and elemental effect and is hypnotic by day and night. The fire element can be run on mains, bottled gas or bio-fuels.



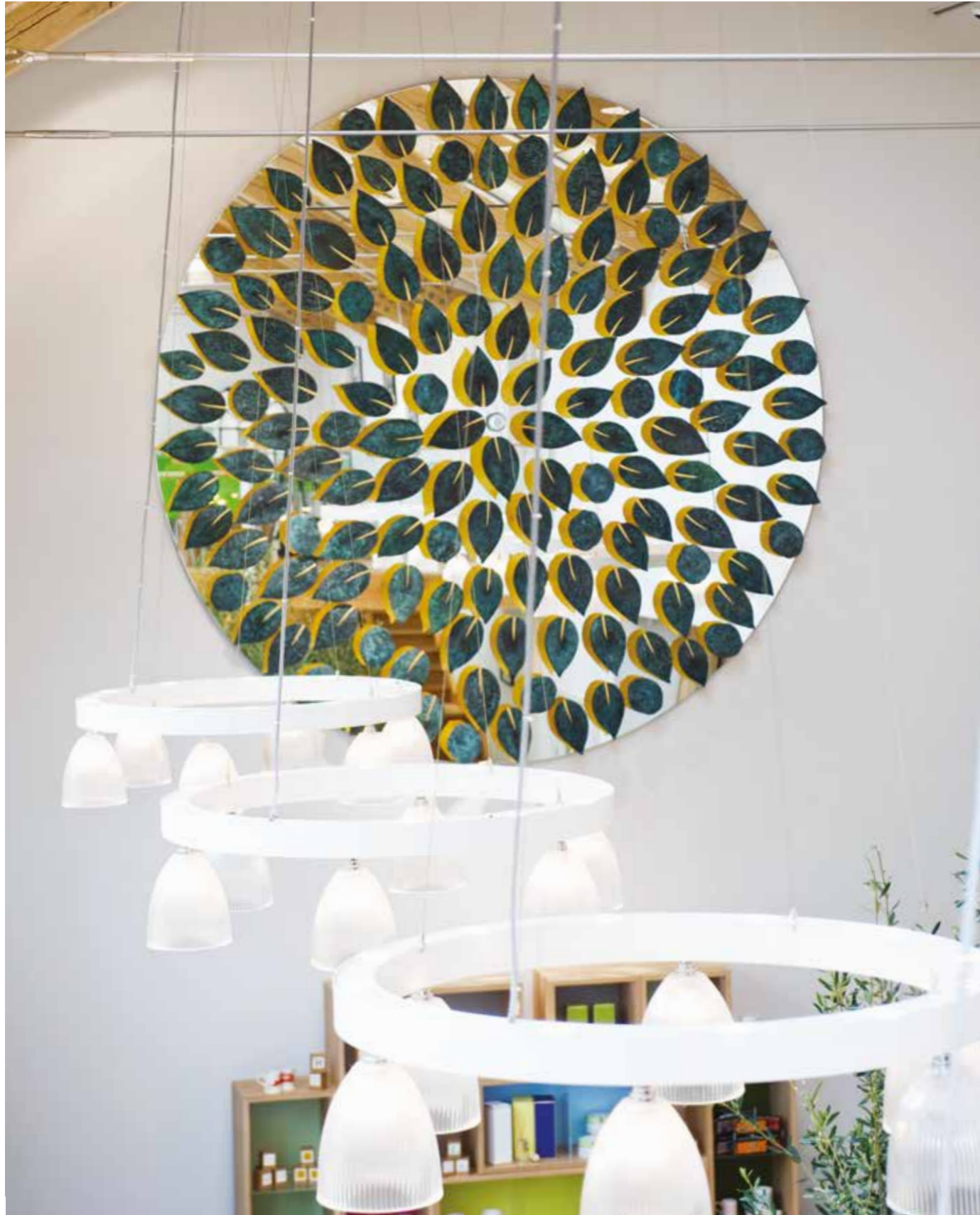


Illustration by Tim Widowson



A NEW LEAF
THE QUINCE TREE

It is always difficult to predict which part of a brief will provide the creative spark for a David Harber design. In the case of The Quince Tree, a light and airy restaurant, café and farm shop in the Chiltern Hills, not far from London, it was their logo. Once that had fired David's imagination, a project that had started as a water wall took off in an entirely new direction.

The challenge was still to fill a large, double-height wall in the café with a visually arresting sculptural feature, but instead of using water we based the installation on a huge circular mirror – one of the largest it is possible to build from a single piece of glass. In front of this, apparently floating in thin air, are the 160 individual verdigris leaves that make up the Quince Tree logo, each fashioned in bronze with a verdigris finish on the front and 23¾-carat gold leaf on the reverse, creating a constantly changing kaleidoscope of green and gold that brings the Quince Tree identity to life in a unique and unforgettable way.



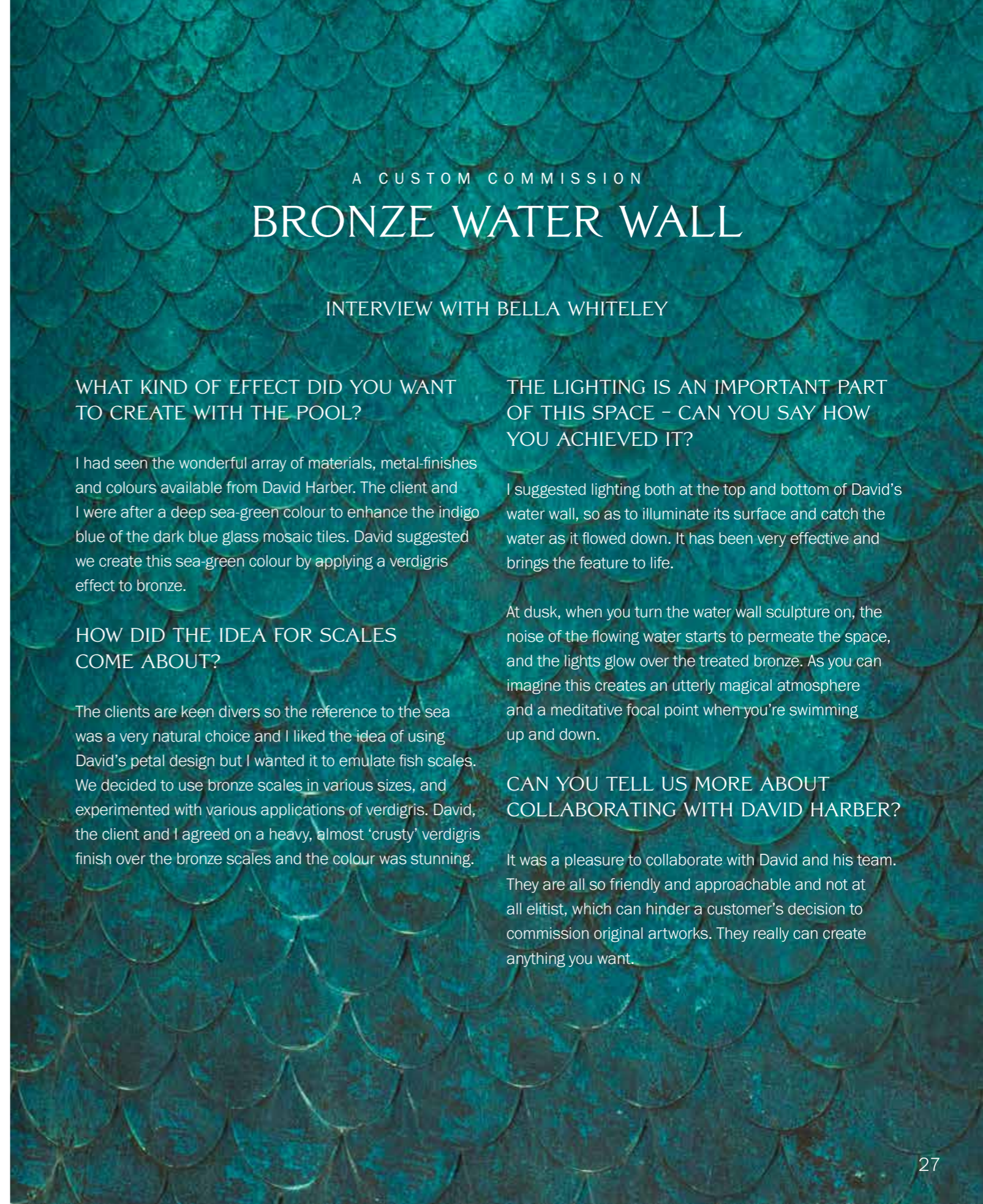
A BESPOKE COMMISSION

TITAN

This was an example of a bespoke commission where the brief from the client was to create an imposing sculptural piece that would sit well in a hall and also help to frame the view to the garden. David's response was to create a human-sized Titan made of bronze which had a wonderfully warm patina to contrast with the mirror-polished stainless steel. This Titan also incorporated two vertical rills of water on the narrower sides to create a dynamic water element.



CLIENT: PRIVATE RESIDENCE IN KENT
PROJECT DESIGNER: BELLA WHITELEY INTERIORS



A CUSTOM COMMISSION
BRONZE WATER WALL

INTERVIEW WITH BELLA WHITELEY

WHAT KIND OF EFFECT DID YOU WANT TO CREATE WITH THE POOL?

I had seen the wonderful array of materials, metal-finishes and colours available from David Harber. The client and I were after a deep sea-green colour to enhance the indigo blue of the dark blue glass mosaic tiles. David suggested we create this sea-green colour by applying a verdigris effect to bronze.

HOW DID THE IDEA FOR SCALES COME ABOUT?

The clients are keen divers so the reference to the sea was a very natural choice and I liked the idea of using David's petal design but I wanted it to emulate fish scales. We decided to use bronze scales in various sizes, and experimented with various applications of verdigris. David, the client and I agreed on a heavy, almost 'crusty' verdigris finish over the bronze scales and the colour was stunning.

THE LIGHTING IS AN IMPORTANT PART OF THIS SPACE - CAN YOU SAY HOW YOU ACHIEVED IT?

I suggested lighting both at the top and bottom of David's water wall, so as to illuminate its surface and catch the water as it flowed down. It has been very effective and brings the feature to life.

At dusk, when you turn the water wall sculpture on, the noise of the flowing water starts to permeate the space, and the lights glow over the treated bronze. As you can imagine this creates an utterly magical atmosphere and a meditative focal point when you're swimming up and down.

CAN YOU TELL US MORE ABOUT COLLABORATING WITH DAVID HARBER?

It was a pleasure to collaborate with David and his team. They are all so friendly and approachable and not at all elitist, which can hinder a customer's decision to commission original artworks. They really can create anything you want.

WAYS OF WORKING

THE BESPOKE COMMISSION

Commissioning a bespoke David Harber offers you direct access to David, his dedicated attention and artistic creativity. Capturing the essence of the space, David personally supports each client through the journey, helping them to shape their vision and using his experience to ask the most important questions about the artwork, creating a dynamic process and fully engaging with each client.

David will spend time overseeing the project from initial site visits and concept sketches to shortlisted designs and working drawings – right through to the creation of the sculpture and its ultimate installation.

THE CUSTOM COMMISSION

A custom commission is another way of acquiring a David Harber artwork and offers a simpler approach than a bespoke one-off commission. This route involves adding your own imprint to an existing David Harber design, by changing the materials, size, finishes, etching and engraving – providing countless combinations that will make it unique.



INSTALLATIONS

All UK mainland commissions are personally delivered and securely installed by our workshop staff. In cases where you may need to provide additional personnel on site (for example, a qualified electrician) we will advise you well in advance.

For overseas installations we have a wealth of experience in packaging, shipping and then coordinating the installations in far-flung places. Our careful planning and meticulous attention to detail is paramount when working on such projects.

ELECTRICITY

To comply with current legislation, all permanent on-site electrical connections must be made by your own NICEIC or equivalently qualified electrician.

FILTRATION

To maintain optimum performance for our water features, we strongly recommend including one of our customised filtration packages and carrying out regular maintenance.

In the UK, if you require a maintenance service our recommended supplier is Aquajoy Water Gardens Ltd who will be happy to provide you with an estimate.

AFTERCARE

All David Harber installations are built to stand the test of time, whether indoors or out in the open, and in most cases require minimal aftercare support.



MEET THE TEAM

Each David Harber commission involves a dedicated team, who guide it through the whole process and advise on all the aesthetic and technical aspects right through to production, finishing and full quality control.

We work directly with clients, or in collaboration with designers, contractors, consultants and project managers. Day-to-day client and contractor liaison is an important part of the process to ensure a successful and enjoyable path between commissioning and completion.

We welcome clients to our Oxfordshire workshop either at the critical early planning stage of a commission or perhaps to look at your own commission being made.



NEXT STEPS

To make an appointment at our studio and workshop, to arrange a site visit
or to discuss your project, please contact us on

+44 (0)1235 859300
or at sales@davidharber.com



DAVID HARBER LTD

Blewburton Barns, Hagbourne Road, Aston Upthorpe
Oxfordshire OX11 9EE England

+44 (0)1235 859300
sales@ davidharber.com

www.davidharber.com